



SGVC VIDYA PRASARAK TRUST®

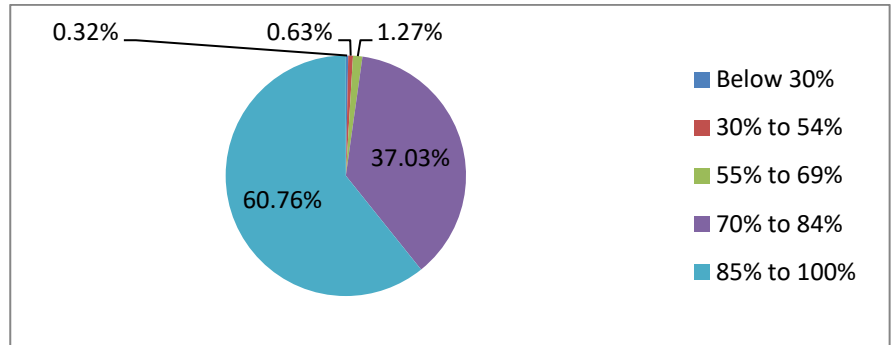
MGVC ARTS, COMMERCE AND SCIENCE COLLEGE, MUDDEBIHAL



SSS REPORT 2021-22

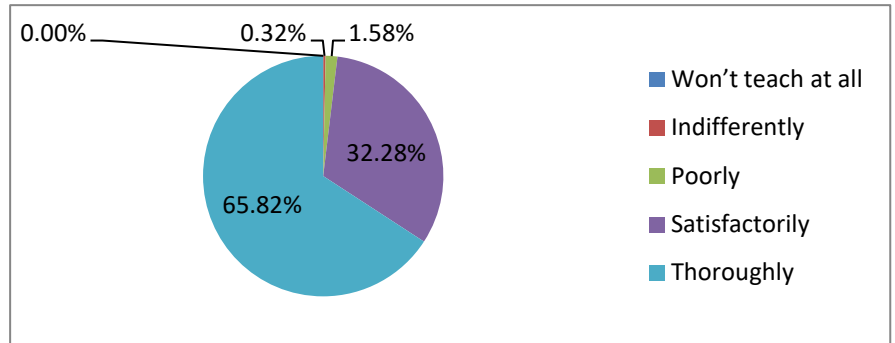
1. How Much of syllabus was covered in the class

Below 30%	2	0.32%
30% to 54%	4	0.63%
55% to 69%	8	1.27%
70% to 84%	234	37.03%
85% to 100%	384	60.76%



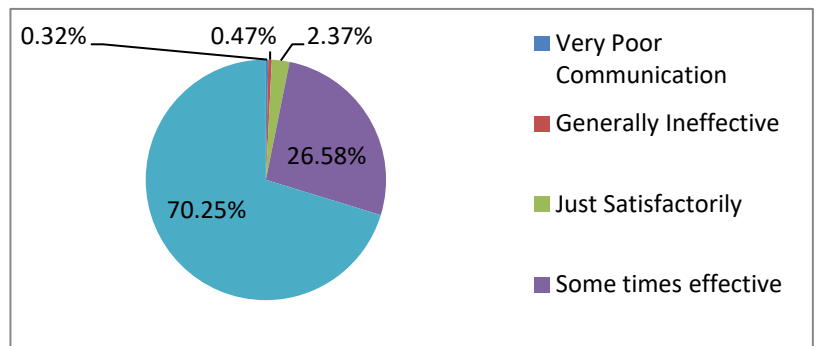
2. How well did the teachers prepare for the class

Won't teach at all	0	0.00%
Indifferently	2	0.32%
Poorly	10	1.58%
Satisfactorily	204	32.28%
Thoroughly	416	65.82%



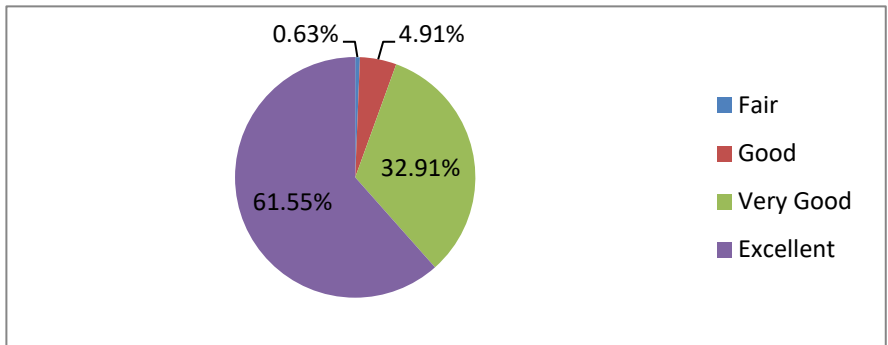
3. How well were teachers able to communicate

Very Poor Communication	2	0.32%
Generally Ineffective	3	0.47%
Just Satisfactorily	15	2.37%
Some times effective	168	26.58%
Always Effective '	444	70.25%



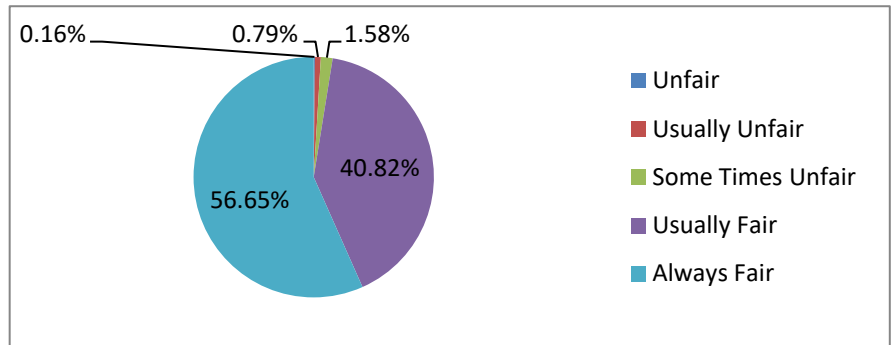
4. The teacher's approach to teaching can best be described as

Fair	4	0.63%
Good	31	4.91%
Very Good	208	32.91%
Excellent	389	61.55%



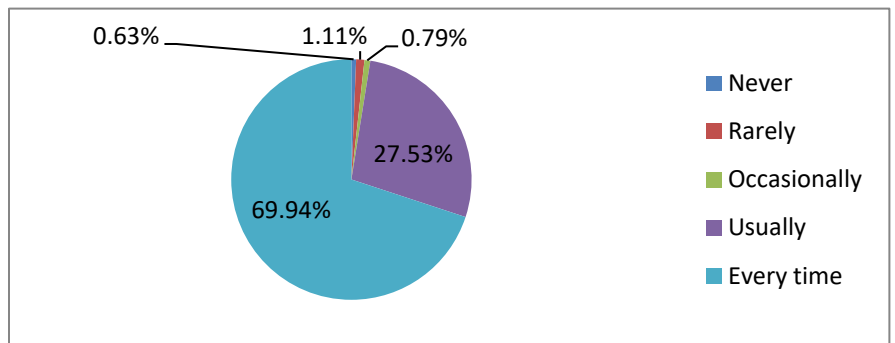
5. Fairness of the internal evaluation process by the teachers

Unfair	1	0.16%
Usually Unfair	5	0.79%
Some Times Unfair	10	1.58%
Usually Fair	258	40.82%
Always Fair	358	56.65%



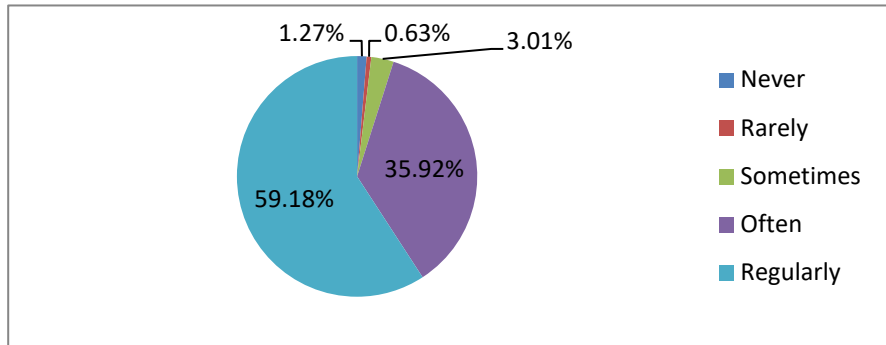
6. Was Your Performance in assignments discussed with you

Never	4	0.63%
Rarely	7	1.11%
Occasionally	5	0.79%
Usually	174	27.53%
Every time	442	69.94%



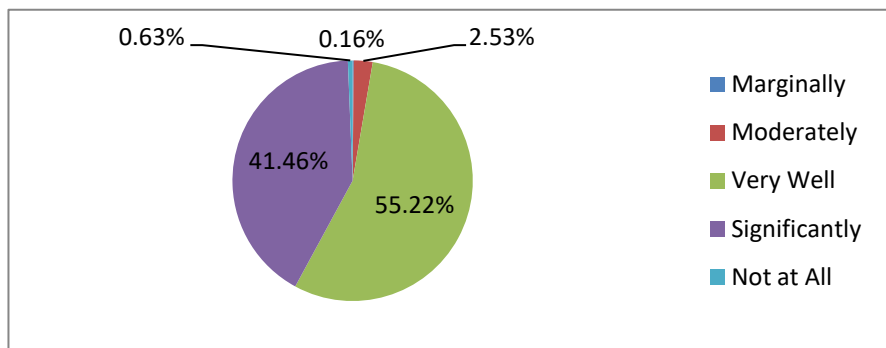
7. The institute takes active interest in promoting internship, student exchange, field visit and opportunities for students.

Never	8	1.27%
Rarely	4	0.63%
Sometimes	19	3.01%
Often	227	35.92%
Regularly	374	59.18%



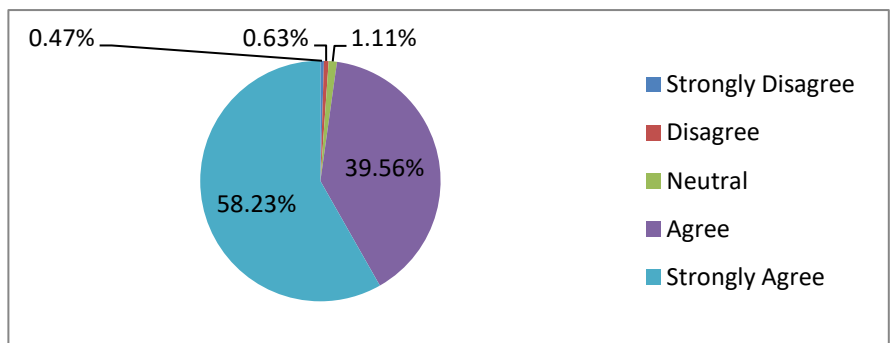
8. The teaching and mentoring process in your institution facilitates in cognitive / social and emotional growth.

Marginally	1	0.16%
Moderately	16	2.53%
Very Well	349	55.22%
Significantly	262	41.46%
Not at All	4	0.63%



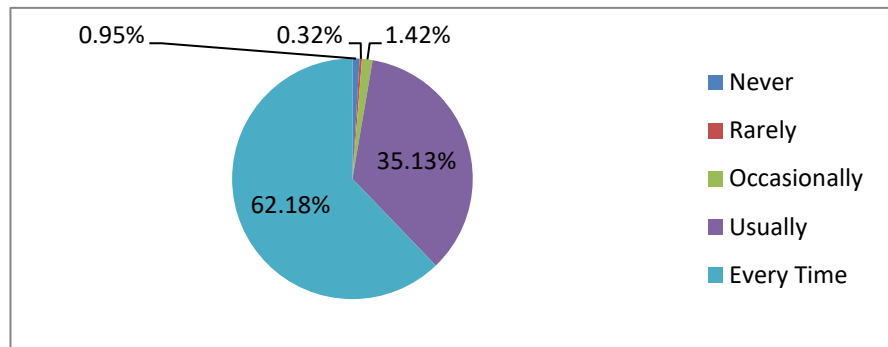
9. The institution provides multiple opportunities to learn and grow

Strongly Disagree	3	0.47%
Disagree	4	0.63%
Neutral	7	1.11%
Agree	250	39.56%
Strongly Agree	368	58.23%



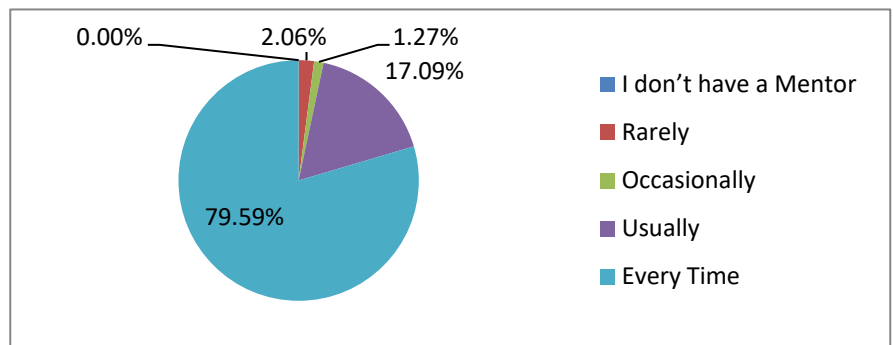
10. Teachers inform you about your expected competencies, course outcomes and programme outcomes

Never	6	0.95%
Rarely	2	0.32%
Occasionally	9	1.42%
Usually	222	35.13%
Every Time	393	62.18%



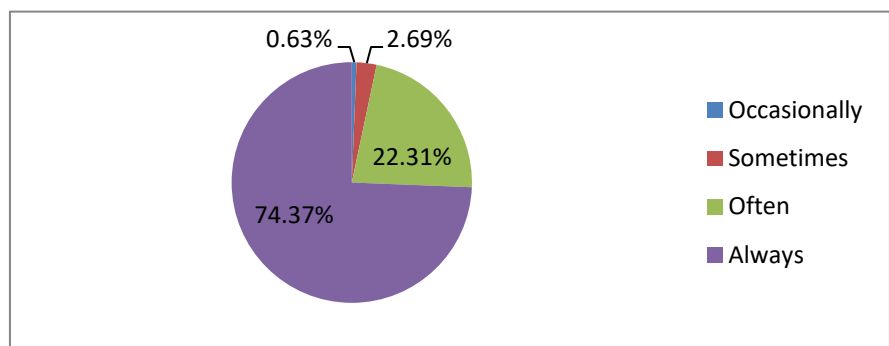
11. Your mentor does a necessary follow-up with an assigned task to you

I don't have a Mentor	0	0.00%
Rarely	13	2.06%
Occasionally	8	1.27%
Usually	108	17.09%
Every Time	503	79.59%



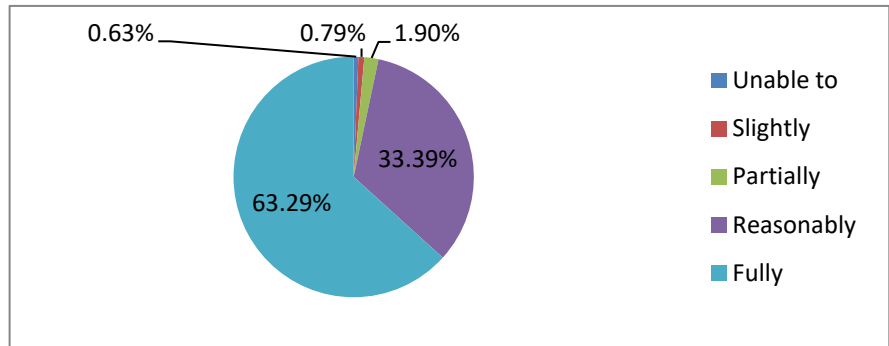
12. The teachers illustrates the concepts through examples and applications

Occasionally	4	0.63%
Sometimes	17	2.69%
Often	141	22.31%
Always	470	74.37%



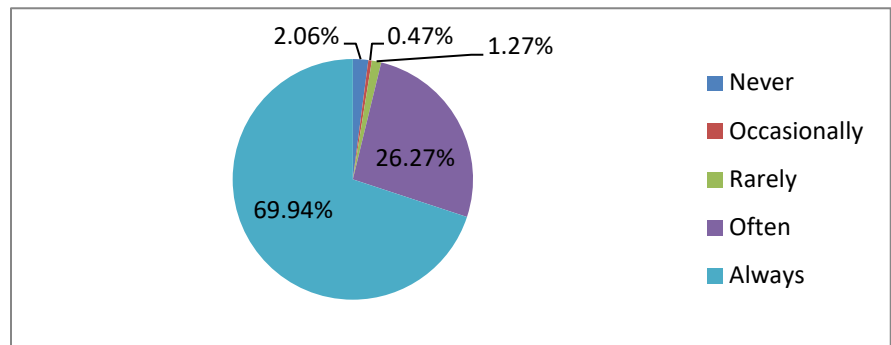
13. The teachers identify your strengths and encourage you with providing right level of challenges

Unable to	4	0.63%
Slightly	5	0.79%
Partially	12	1.90%
Reasonably	211	33.39%
Fully	400	63.29%



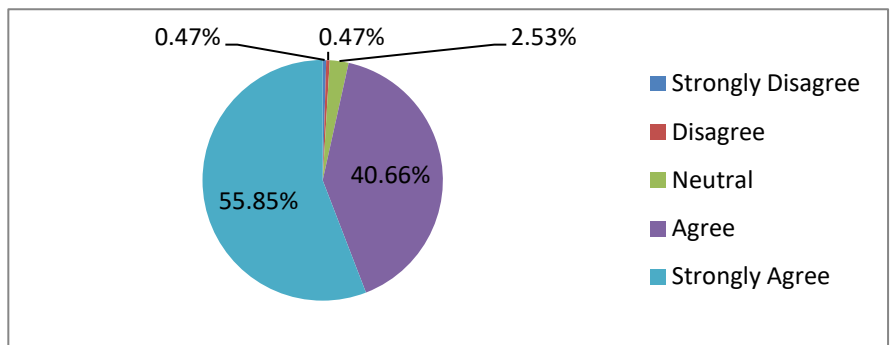
14. Teachers are able to identify your weaknesses and help you to overcome them

Never	13	2.06%
Occasionally	3	0.47%
Rarely	8	1.27%
Often	166	26.27%
Always	442	69.94%



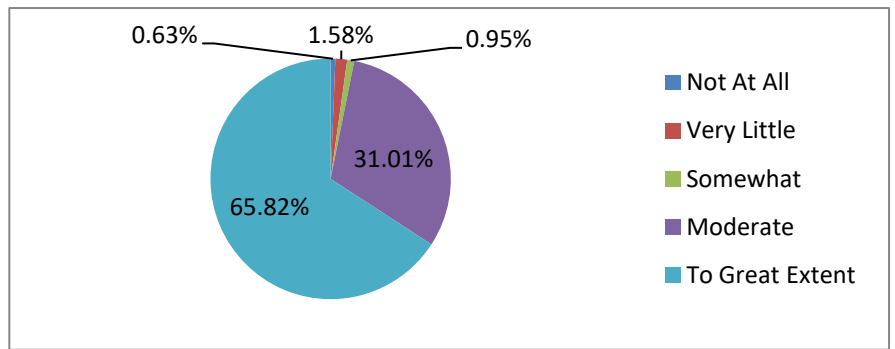
15. The Institution makes effort to engage students in the monitoring, review and continuous quality improvement of the teaching learning process.

Strongly Disagree	3	0.47%
Disagree	3	0.47%
Neutral	16	2.53%
Agree	257	40.66%
Strongly Agree	353	55.85%



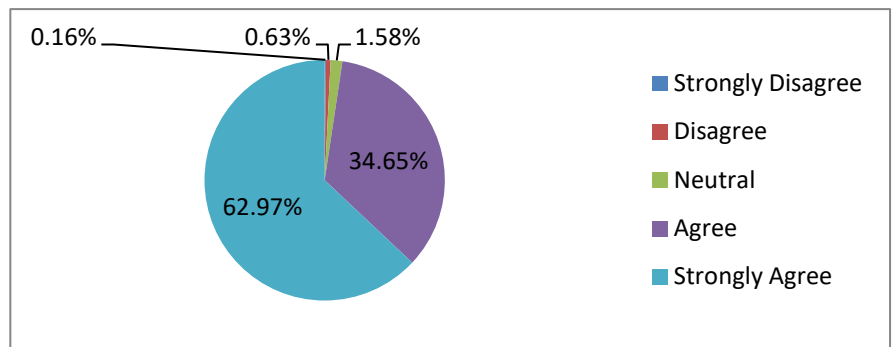
16. The institute / teachers use student centric methods such as experimental learning, participative learning and problem solving methodologies for enhancing learning experiences.

Not At All	4	0.63%
Very Little	10	1.58%
Somewhat	6	0.95%
Moderate	196	31.01%
To Great Extent	416	65.82%



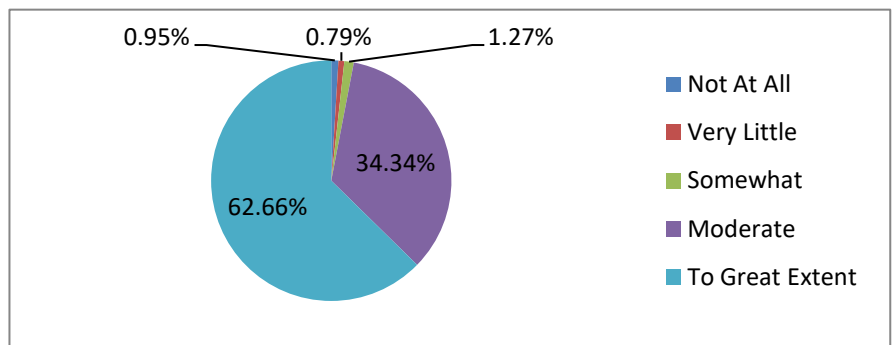
17. Teachers encourage you to participate in a extracurricular activities.

Strongly Disagree	1	0.16%
Disagree	4	0.63%
Neutral	10	1.58%
Agree	219	34.65%
Strongly Agree	398	62.97%



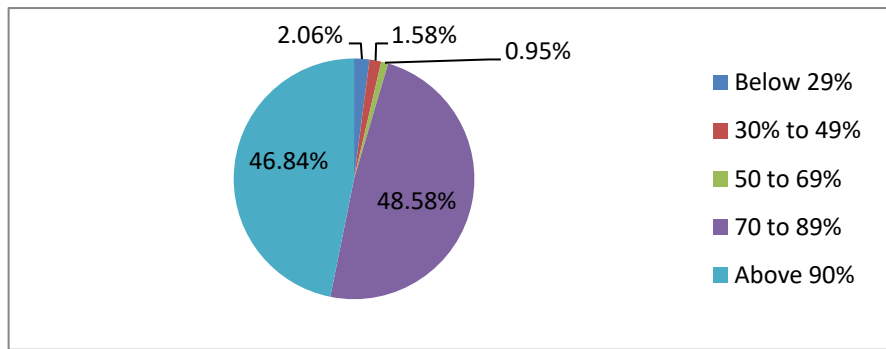
18. Efforts are made by the institute / teachers to inculcate soft skills, life skills and employ-ability skills to make you ready for the world of work.

Not At All	6	0.95%
Very Little	5	0.79%
Somewhat	8	1.27%
Moderate	217	34.34%
To Great Extent	396	62.66%



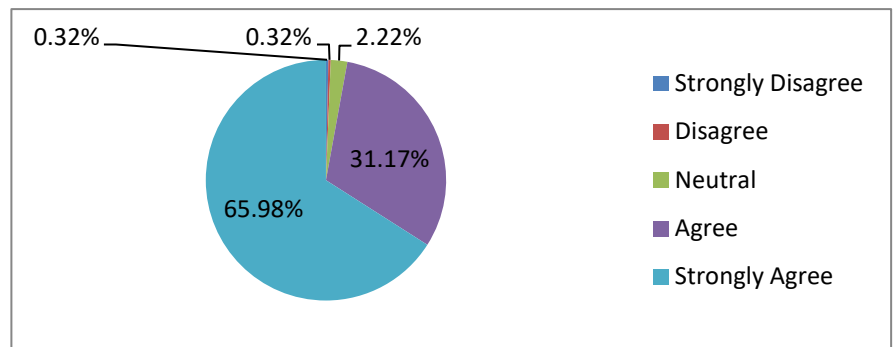
19. What percentage of teachers use ICT tools such as LCD projector, Multimedia etc while teaching

Below 29%	13	2.06%
30% to 49%	10	1.58%
50 to 69%	6	0.95%
70 to 89%	307	48.58%
Above 90%	296	46.84%



20. The Overall quality of teaching learning process in your institute is very good

Strongly Disagree	2	0.32%
Disagree	2	0.32%
Neutral	14	2.22%
Agree	197	31.17%
Strongly Agree	417	65.98%



21. Key Areas in Which students have suggested Changes are –

- Purchase of latest edition of books.
- Improvement in Infrastructure and academics.
- Improve the use of technology.